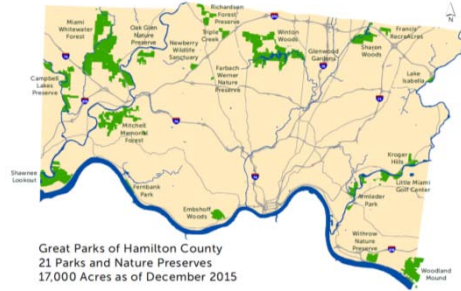


### Connecting People to the Great Outdoors



### 17,000 Acres as of December 31, 2015



Great Parks of Hamilton County  
21 Parks and Nature Preserves  
17,000 Acres as of December 2015



### What we do



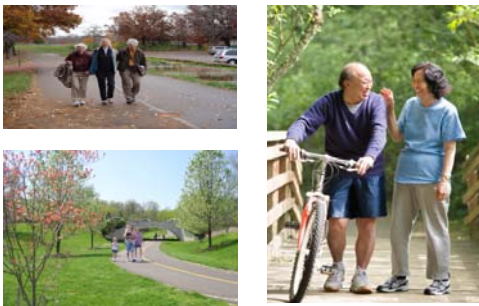
### Conservation



Over 80% of land area preserved



### Outdoor Recreation



70 miles of trails / 1.1 million visits annually



### Nature Education



7,500 programs / 135,000 attendees



### Conserving Nature – *Intentionally*



### Grasslands and Meadows



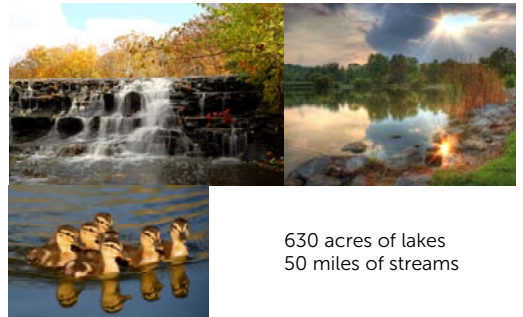
1,800 acres of grasslands managed



### Prairies



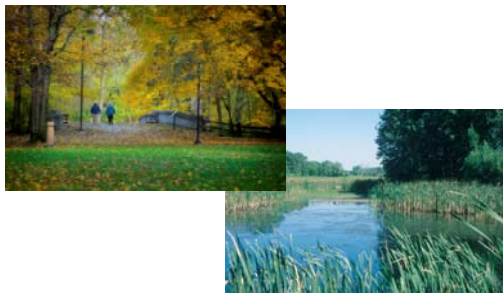
### Aquatic Habitats



630 acres of lakes  
50 miles of streams



### Forests & Wetlands



10,100 acres of forests and wetlands



### Growing The Future



Shaker Trace Nursery & Aquaculture Ponds



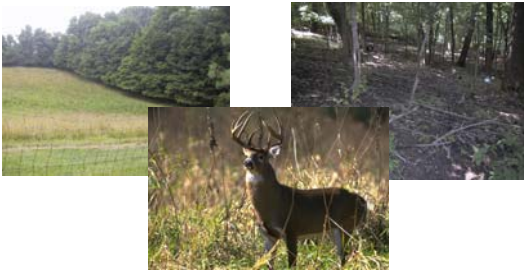
### Research



### Honeysuckle Management



### Deer Management



### Emerald Ash Borer




Year	2015
Total Volunteers Engaged	1,920
Active GP Volunteers	600 +/-
Corporate Volunteers	300 +
Community Volunteers	900 +
Total Hours	61,192



# 2015 Accomplishments



Awards



2015 Environmental / Conservation Award

